

LIVEDIVIDER PLUS



LiveDivider PLUS®



Mobilane is launching LiveDivider PLUS, the newest version of LiveDivider: an innovative modular system for vertical greenery in learning, working and living environments. This stylish green room divider offers extensive options in the flexible arrangement of rooms to create exactly the amount of privacy and distance required, while retaining the room's open aspect. The room divider's warm, bright and sustainable appeal makes it a perfect solution for waiting rooms, meeting rooms and flexible workspaces.

A CLEVER STACKABLE SYSTEM

LiveDivider PLUS is a unique modular system in which one, two or three modules with interchangeable cassettes that serve as planters are vertically stacked on top of each other. This makes the LiveDivider PLUS a highly flexible, space-saving room divider with extensive possibilities in terms of application.

HEALTHY INDOOR CLIMATE

The plants on both sides of the room divider absorb ambient noise and improve the indoor climate by producing oxygen and absorbing carbon dioxide and pollutant particles. The plants get their water from an internal water buffering system that makes use of capillary action. This ensures that the plants are constantly supplied with water for four to six weeks. The system works without electricity or batteries.



LIVEDIVIDER PLUS MATERIALS



Cassettes: the front of the cassettes is made of air permeable Expanded Polypropylene (EPP). The backside is made of polypropylene (PP). The cassettes are fitted with capillary microfibre textile woven from 80% polyester and 20% polyamide. All materials can be reused and are fully recyclable.



Frame: the base plate and frame are made of powder-coated steel and are fully recyclable.



Plants: the plants used in the pre-cultivated cassettes in the LiveDivider PLUS are grown at the Dartplant production site working according to 'On the way to PlanetProof' certification. This independent quality mark proves that the plants for the LiveDivider PLUS have been produced more sustainably and are therefore a better choice for nature, climate and animals. The online Mobilane PlantGuide gives an overview of selected plant species that are recommended for planting the LiveDivider PLUS.

UNIQUE FEATURES

Modular and multi-applicable

Maintains water supply for 4-6 weeks, with water level gauge

Sustainable, reusable and fully recyclable

No electricity, pump or water drainage required

Low maintenance

High quality design

Free-standing with plants on both sides

Interchangeable planter cassettes with space for different types of plants



BENEFITS

A simple and sustainable way to divide spaces

Improves acoustics and dampens sound

Improves the indoor climate and air quality

Improves concentration, productivity and general well-being, reduces stress

Takes up little space



LIVEDIVIDER PLUS 1

LIVEDIVIDER PLUS 2

LIVEDIVIDER PLUS 3

The LiveDivider PLUS 1 consists of a base plate, a base module and a cover.

The LiveDivider PLUS 2 consists of a base plate, a base module, a plus module and a cover.

The LiveDivider PLUS 3 consists of a base plate, a base module, two plus modules and a cover.



SPECIFICATIONS LIVEDIVIDER PLUS

Description	Dimensions (W x H x D)	Number of cassettes	Weight (empty)	Content in litres
LiveDivider PLUS 1	112 x 81 x 19 cm	4	57.4 kg	17.5 Litres
LiveDivider PLUS 2	112 x 131 x 19 cm	8	76.0 kg	35 Litres
LiveDivider PLUS 3	112 x 180.5 x 19 cm	12	94.6 kg	52.5 Litres

AVAILABLE COLOURS



White



Black



Custom

The LiveDivider PLUS is available in white (RAL 9003) and black (RAL 9004) as a standard and can be supplied in any RAL colour on request.



PARTS



BASE PLATE



BASE MODULE



PLUS MODULE



COVER



CASTOR MODULE



CASSETTE



OPTIONS

CASTOR MODULE

The LiveDivider PLUS can be expanded with the Castor Module: a base unit with integrated wheels, made from the same material as the LiveDivider PLUS. This makes the system easy to move while maintaining its sleek and uniform design.



SINGLE-SIDED PLANTING

The LiveDivider PLUS comes standard with planting on both sides. However, each module is also available with single-sided planting, allowing the reverse side to be used for other functions, for example as a magnetic board. In this way, the system combines greenery with practical functionality.

INSTALLATION & MAINTENANCE



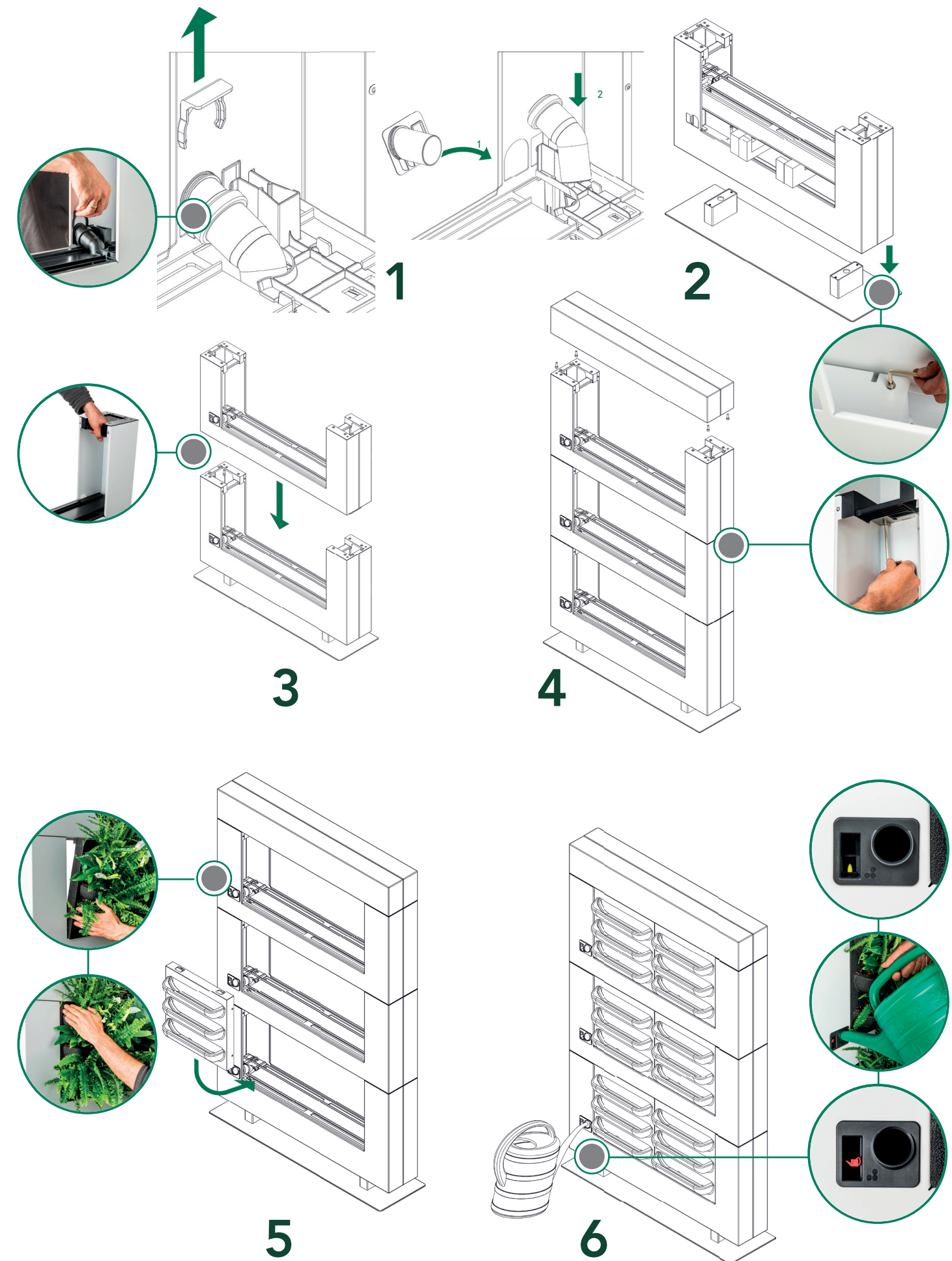
The LiveDivider comes with a installation manual. The modules can be easily stacked on top of each other and are attached to one another with four screws. The location of the LiveDivider PLUS should be taken into consideration when selecting the plants. Read the PlantGuide on the Mobilane website for tips.

RECOMMENDATIONS

- LiveDivider PLUS consists of a base module that can be expanded with one or two Plus modules as required. Two people are required for fast and proper installation of a LiveDivider PLUS.
- For optimal plant growth, it is recommend to use fertilizer like LiveFeed and to install the LiveDivider PLUS in a location with sufficient natural light.
- Each module has its own filling opening for watering.

PRUNING

The plants in the cassettes can be pruned throughout the year. Pruning dead or unhealthy material will stimulate new growth, making the plants become fuller and more compact and helping them retain their green and fresh appearance.



REFERENCES AND APPLICATIONS



OFFICES



RECEPTION AREA



OFFICES



RECEPTION AREA

